

Monthly Weather Summary in Thailand

November 2019

In November 2019, high pressure area from China periodically extended its ridge to cover upper Thailand causing cool weather in the northern and northeastern parts almost the whole month and cold weather in some areas of the upper portion whereas cool weather was found in several areas for the rest parts. However, mean monthly temperatures were higher than normal in all regions especially in the northern, northeastern and central parts where temperatures had exceeded 1.0 °C anomaly. In this month, the rainfall was observed for few days in upper Thailand during the first half of the month after that there was no rain reported. In southern parts, abundant rainfall with heavy to very heavy rainfall was occasionally observed mainly along the east coast due to the prevailing of the northeast monsoon over the Gulf of Thailand and southern parts accompanied with the monsoon trough lay across upper southern part during early month. It lay toward to the active low pressure cell in the middle South China Sea, which later developed into Typhoon “NAKRI” (1924) making landfall at Vietnam as it was tropical storm strength and subsequently weakened into a low pressure cell covering the area of Cambodia. Monthly rainfall was below normal in every parts of Thailand i.e. northern part 16.3 mm (50%), northeastern part 16.0 mm (82%), central 24.2 mm (65%), eastern 27.5 mm (52%), southern part (east coast) 122.2 mm (34%) and southern part (west coast) 13.3 mm (7%).

1 – 10 November: The ridge of high pressure area from China covered the northern and northeastern parts during early period and another moderate high pressure areas from China extended its ridge to cover upper Thailand during the middle and the end of the period. Moreover, the northeast monsoon prevailed over the Gulf of Thailand and southern part. Besides, during mid-period, the monsoon trough lay across upper southern part toward the active low pressure cell in the middle South China Sea which later intensified into the tropical depression and tropical storm “NAKRI” (1924) on November 5 and reached typhoon strength in the afternoon of November 8. It downgraded into the tropical storm in the morning of November 9 approaching coastal of central Vietnam. These conditions caused cool weather in most areas of the northern and northeastern parts with cold weather in some places whereas cool weather was reported in many areas for the rest parts mainly during late period. The minimum temperature of 14.5 °C was recorded at Agrometeorological station in Chiang Rai province on November 1 and 7.1 °C over the area of mountaintop at Kew Mae Pan, Doi Inthanon, Amphoe Chom Thong in Chiang Mai province on November 10. For Rainfall, northern region received isolated to scattered rain with heavy rainfall in some areas while northeastern, central and eastern parts obtained scattered to fairly widespread rain during early period with heavy rainfall in some areas and very heavy rainfall was reported in the eastern part of 145.0 millimeter at Laem Ngop in Trat province on November 4. Southern Thailand experienced abundant rainfall throughout the period with fairly widespread rain and heavy to very heavy rainfall in some areas along the east coast whereas fairly widespread rain with heavy rainfall in some places was found along the west coast. The highest amount of rainfall in southern part was 112.0 millimeter at Tha Chang in Surat Thani province on November 9.

11 – 20 November: The ridge of high pressure area extending to cover upper Thailand throughout the period and the northeast monsoon blowing across the Gulf of Thailand and southern part brought generally cool weather to the northern and northeastern parts almost the period as well as cool weather in several areas for the rest parts. The lowest minimum temperature was 15.0 °C at Agrometeorological station in Chiang Rai province on November 19 and it dropped to 4.0 °C over the areas of mountaintop at Doi Inthanon, Chom Thong in Chiang Mai on November 18. Moreover, with the remnant of typhoon “NAKRI” (1924) made landfall at Nha Trang, Vietnam at 01.00 a.m. of November 11 as the tropical storm strength and downgraded into the tropical depression and moved farther inland before weakening into the active low pressure cell covering Cambodia, upper Thailand received unseasonable rainfall during early period with the maximum daily rainfall of 32.0 mm at Phu Luang Wildlife Sanctuary in Loei province on November 13. In Southern part, rainfall was mainly observed during the middle and the end of the period with scattered to fairly widespread rain and heavy rainfall in some areas while very heavy rainfall was reported in some areas of the east coast. The highest daily rainfall was 125.9 mm at Amphoe Mueang in Prachuap Khiri Khan province on November 14.

21 – 30 November: The persistence of high pressure area extending to cover upper Thailand as well as the strengthening of the northeast monsoon during the second half of the period, temperature was relatively decreased with generally cool weather in the northern and northeastern parts and cold weather in several areas of the upper portion and cool weather was found in many areas for the rest parts during the first half of the period. The lowest temperature of 12.5 °C was measured at Umphang in Tak province on November 24 and 26 and it dropped to 3.5 °C in mountainous areas at Kew Mae Pan, Doi Inthanon in Chiang Mai province on November 27 with occurrence of frost at Doi Inthanon on November 26 and 27 as well. For rainfall, there was no rainfall in upper Thailand except in the lower coastal of the eastern part that obtained 1.2 millimeter of rainfall at Bo Rai in Trat province on November 27. In Southern part, abundant rainfall was observed along the east coast from Chumphon province southward especially during the middle and the end of the periods that received fairly widespread rain with heavy to very heavy rainfall in some places. The highest daily rainfall was 353.4 mm at Sungai Kolok in Narathiwat province on November 30 with flooding on the same day.

Note : Rainfall, temperatures and natural disasters in this report was updated up to December 3, 2019.

Climatological Center
Meteorological Development Division
Meteorological Department

Monthly Current Report
Rainfall and Accumulative Rainfall
November 2019

Northern Thailand

Station	Temperature (°c)		Rainfall (mm)		Accumulative rainfall (mm) Since 1 January	
	Mean	Above or below normal	Actual	Above or below normal	Actual	Above or below normal
Chiang Rai	24.3	2.1	39.8	-19.4	990.9	-685.6
Mae Hong Son	25.1	1.1	16.5	-28.4	1127.6	-154.4
Phayao	24.4	1.7	2.0	-35.3	723.4	-402.7
Chiang Mai	26.1	2.1	56.0	2.1	992.0	-122.7
Tha Wang Pha	25.0	1.9	1.9	-25.7	1337.7	-59.4
Nan	25.5	1.6	0.9	-17.2	1275.0	49.5
Lamphun	25.5	1.6	41.8	-2.3	903.6	-92.8
Lampang	25.9	1.7	14.6	-14.9	1230.9	192.4
Mae Sariang	25.4	1.5	0.7	-21.4	912.3	-215.9
Phrae	26.0	1.6	17.1	-8.5	999.9	-107.1
Uttaradit	27.3	1.4	32.9	6.2	842.8	-523.8
Bhumibol Dam	26.2	1.4	3.5	-41.3	742.7	-293.5
Tak	26.3	1.1	55.3	0.7	879.2	-176.8
Mae Sot	26.1	1.7	0.0	-23.7	1650.6	188.9
Umphang	22.8	0.8	3.1	-22.1	1326.8	-129.4
Phitsanulok	27.3	0.8	13.1	-20.3	867.6	-438.3
Lom Sak	27.0	1.6	12.5	-1.4	814.3	-224.3
Phetchabun	27.5	2.1	1.8	-9.8	881.0	-244.6
Wichian Buri	27.4	1.1	3.3	-17.0	1134.8	-81.5
Kamphaeng Phet	27.2	1.3	15.6	-26.4	1041.6	-256.3
Over the area	25.9	1.5	16.6	-16.3 -50%	1033.7	-189.0 -15%

Northeastern Thailand

Station	Temperature (°c)		Rainfall (mm)		Accumulative rainfall (mm) Since 1 January	
	Mean	Above or below normal	Actual	Above or below normal	Actual	Above or below normal
Nong Khai	26.6	2.0	0.2	-15.0	1607.9	4.0
Loei	25.4	1.8	0.2	-19.8	625.9	-606.3
Udon Thani	25.7	0.8	0.0	-10.3	1285.7	-129.8
Nakhon Phanom	25.6	1.2	8.0	-1.7	2178.1	-163.9
Sakon Nakhon	25.2	0.8	1.6	-10.3	1213.0	-426.4
Mukdahan	25.7	1.3	0.5	-12.8	1587.0	109.6
Khon Kaen	26.4	1.4	17.8	1.9	1068.6	-174.1
Kosum Phisai	26.3	1.0	1.5	-16.6	1258.6	-2.0
Roi Et	26.3	1.4	0.0	-15.2	1530.7	190.8
Chaiyaphum	27.1	1.5	1.0	-18.0	778.8	-354.3
Ubon Ratchathani	26.2	0.8	7.0	-15.6	1697.7	117.0
Tha Tum	26.7	1.3	1.8	-19.2	1188.0	-198.9
Surin	26.3	1.0	3.1	-25.6	1194.2	-236.1
Nakhon Ratchasima	26.6	1.2	6.8	-17.1	650.1	-418.7
Chok Chai	26.3	1.2	2.3	-27.1	573.9	-497.7
Nang Rong	25.9	0.9	4.3	-32.9	829.3	-361.2
Over the area	26.1	1.2	3.5	-16.0 -82%	1204.2	-196.8 -14%

- NOTES :
- 1) Mean temperature is the average of daily dry-bulb temperature
 - 2) "T" is trace, rainfall amount less than 0.1 mm.
 - 3) "blank" is incomplete data.
 - 4) Temperature and rainfall are preliminary data.

Monthly Current Report
Rainfall and Accumulative Rainfall
November 2019

Central Thailand

Station	Temperature (°c)		Rainfall (mm)		Accumulative rainfall (mm) Since 1 January	
	Mean	Above or below normal	Actual	Above or below normal	Actual	Above or below normal
Nakhon Sawan	27.8	1.3	4.7	-22.7	975.4	-169.7
Bua Chum	26.7	1.0	9.6	-12.5	908.9	-173.9
Lop Buri	28.5	1.4	4.1	-29.0	790.1	-330.5
Suphan Buri	28.1	1.3	5.8	-38.3	513.2	-455.5
Thong Pha Phum	26.0	0.7	11.0	-14.6	1477.4	-304.4
Kanchanaburi	27.6	1.2	51.1	-7.5	687.4	-362.8
Bangkok Airport	28.5	0.8	10.8	-26.2	998.0	-370.8
Bangkok Metropolis	28.8	1.0	6.7	-42.8	1058.1	-583.8
Over the area	27.8	1.1	13.0	-24.2 -65%	926.1	-343.9 -27%

Eastern Thailand

Station	Temperature (°c)		Rainfall (mm)		Accumulative rainfall (mm) Since 1 January	
	Mean	Above or below normal	Actual	Above or below normal	Actual	Above or below normal
Prachin Buri	28.9	1.5	6.1	-25.6	1341.4	-476.9
Kabin Buri	27.0	0.3	0.4	-28.7	1285.9	-307.0
Aranyaprathet	27.9	1.2	0.7	-34.8	1123.1	-216.9
Chon Buri	28.7	1.1	55.2	6.4	1073.2	-216.9
Ko Sichang	28.1	0.9	13.7	-46.9	900.8	-309.6
Pattaya	28.1	1.4	2.6	-69.5	849.0	-253.4
Sattahip	27.4	0.5	75.3	-0.8	1244.6	-11.5
Rayong	27.6	0.4	20.0	-30.8	942.4	-434.9
Chanthaburi	28.2	1.3	19.9	-34.6	2545.4	-442.0
Khlong Yai	28.3	1.0	64.3	-9.3	5355.3	530.8
Over the area	28.0	0.9	25.8	-27.5 -52%	1666.1	-214.0 -11%

- NOTES :
- 1) Mean temperature is the average of daily dry-bulb temperature
 - 2) "T" is trace, rainfall amount less than 0.1 mm.
 - 3) "blank" is incomplete data.
 - 4) Temperature and rainfall are preliminary data.

Monthly Current Report
Rainfall and Accumulative Rainfall
November 2019

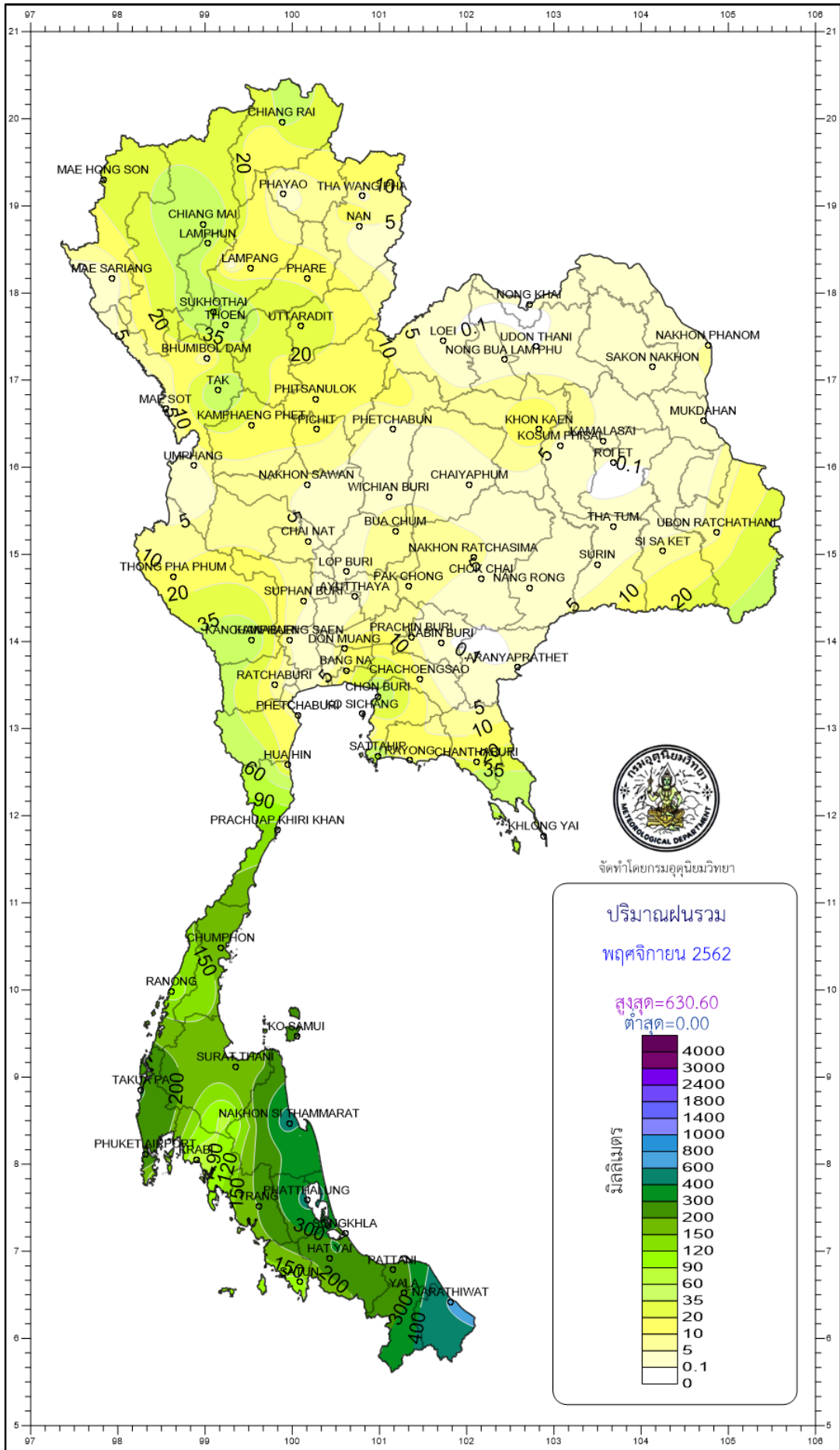
Southern Thailand, east coast

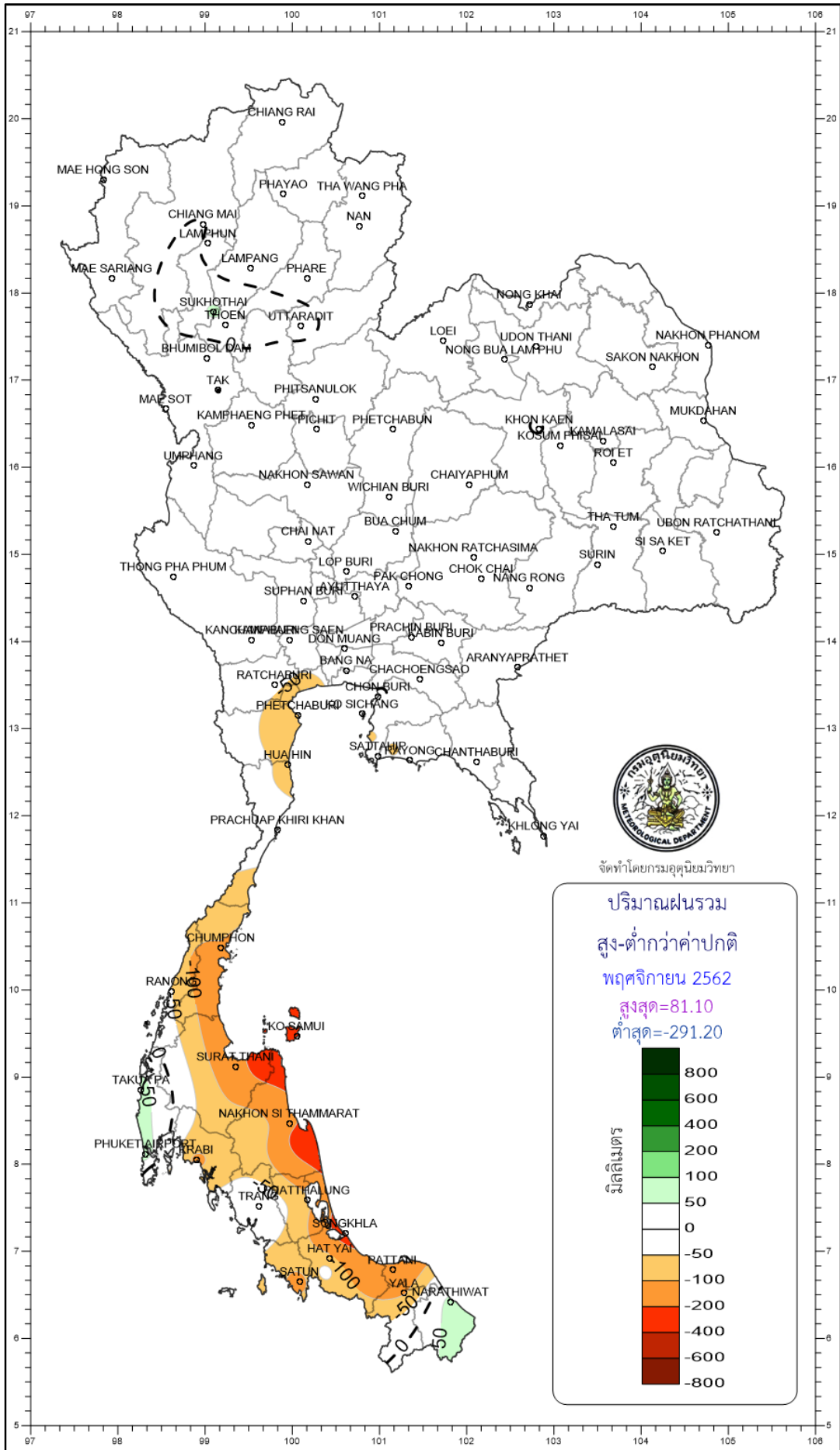
Station	Temperature (°c)		Rainfall (mm)		Accumulative rainfall (mm) Since 1 January	
	Mean	Above or below normal	Actual	Above or below normal	Actual	Above or below normal
Phetchaburi	28.4	1.5	9.2	-84.6	585.6	-390.1
Hua Hin	28.1	1.2	9.7	-91.5	649.8	-297.4
Prachuap Khiri Khan	27.2	0.6	133.6	-20.9	855.8	-221.0
Chumphon	26.8	0.8	181.8	-106.1	1660.8	-88.6
Surat Thani	26.4	0.5	175.1	-154.8	1189.1	-303.5
Ko Samui	27.6	0.8	244.0	-262.6	1232.4	-517.4
Nakhon Si Thammarat	26.5	0.4	498.5	-132.7	1931.0	-113.8
Songkhla	27.8	0.9	256.1	-289.8	1264.2	-357.8
Hat Yai Airport	26.8	0.8	219.2	-97.9	1313.4	-145.2
Pattani Airport	27.0	0.7	227.1	-179.5	1389.1	-97.7
Narathiwat	26.7	0.4	630.6	75.7	2162.2	267.1
Over the area	27.2	0.8	235.0	-122.2 -34%	1293.9	-206.1 -14%

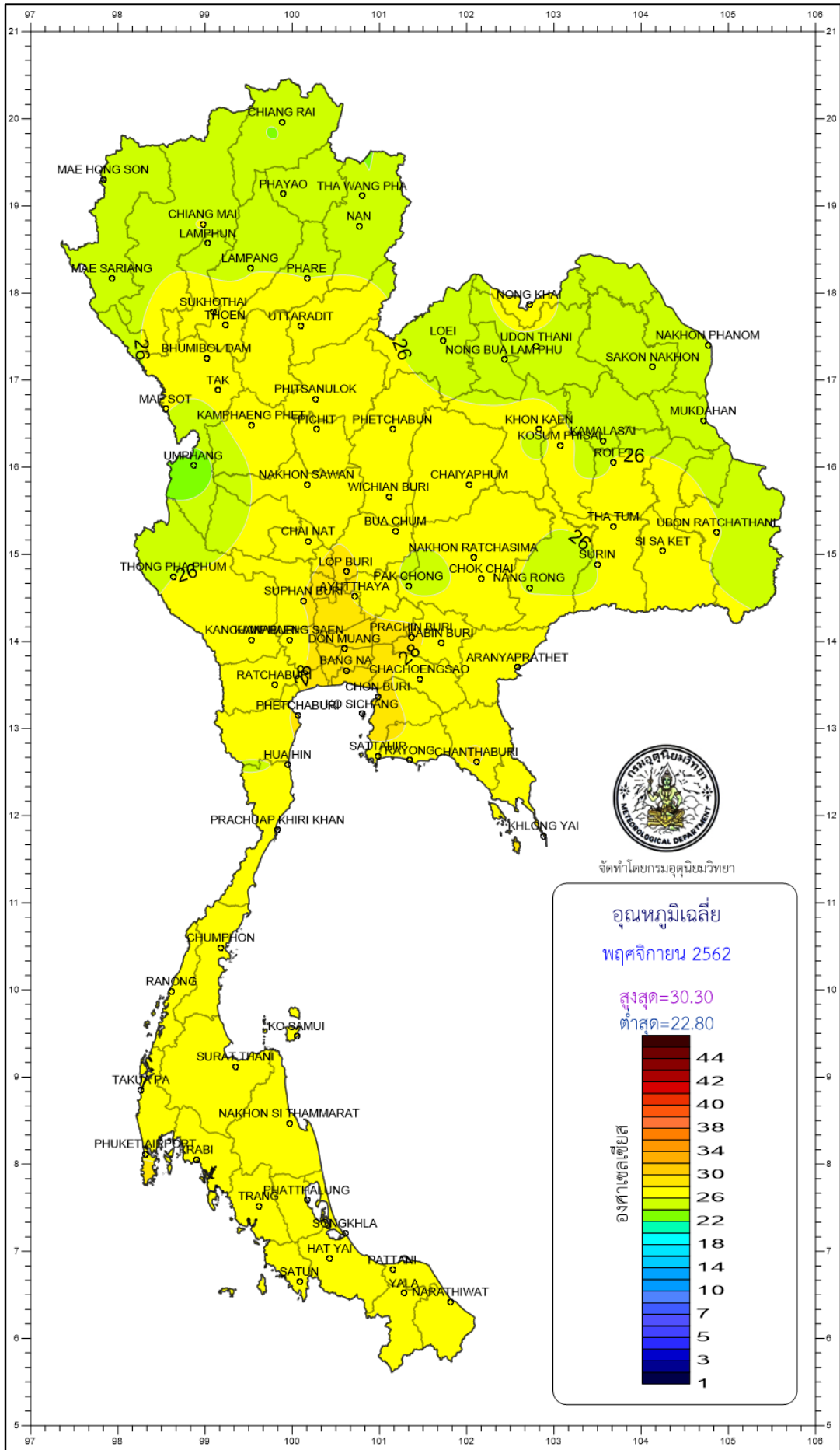
Southern Thailand, west coast

Station	Temperature (°c)		Rainfall (mm)		Accumulative rainfall (mm) Since 1 January	
	Mean	Above or below normal	Actual	Above or below normal	Actual	Above or below normal
Ranong	27.1	0.6	105.9	-46.4	3816.1	-206.8
Takua Pa	27.1	0.6	308.8	67.9	3362.7	-233.2
Phuket	28.5	0.9	136.8	-40.6	1643.8	-503.3
Phuket Airport	27.8	0.9	288.9	81.1	2435.7	28.1
Ko Lanta	27.6	0.5	114.0	-33.1	2014.8	-106.2
Trang Airport	27.2	0.8	204.3	0.4	2015.6	-7.5
Satun	27.6	0.7	101.0	-122.9	1951.5	-241.5
Over the area	27.6	0.8	180.0	-13.3 -7%	2462.9	-181.4 -7%

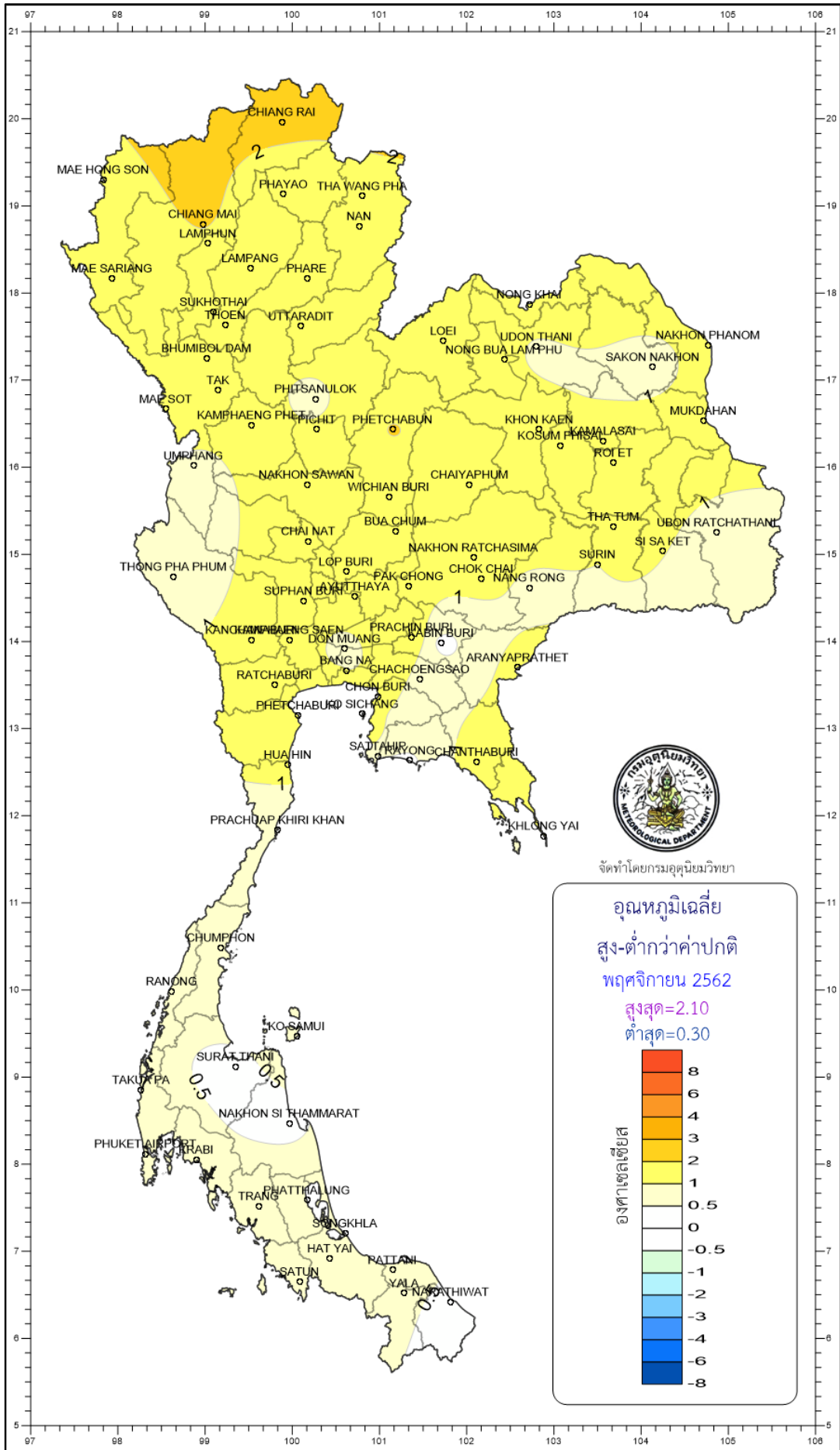
- NOTES :
- 1) Mean temperature is the average of daily dry-bulb temperature
 - 2) "T" is trace, rainfall amount less than 0.1 mm.
 - 3) "blank" is incomplete data.
 - 4) Temperature and rainfall are preliminary data.



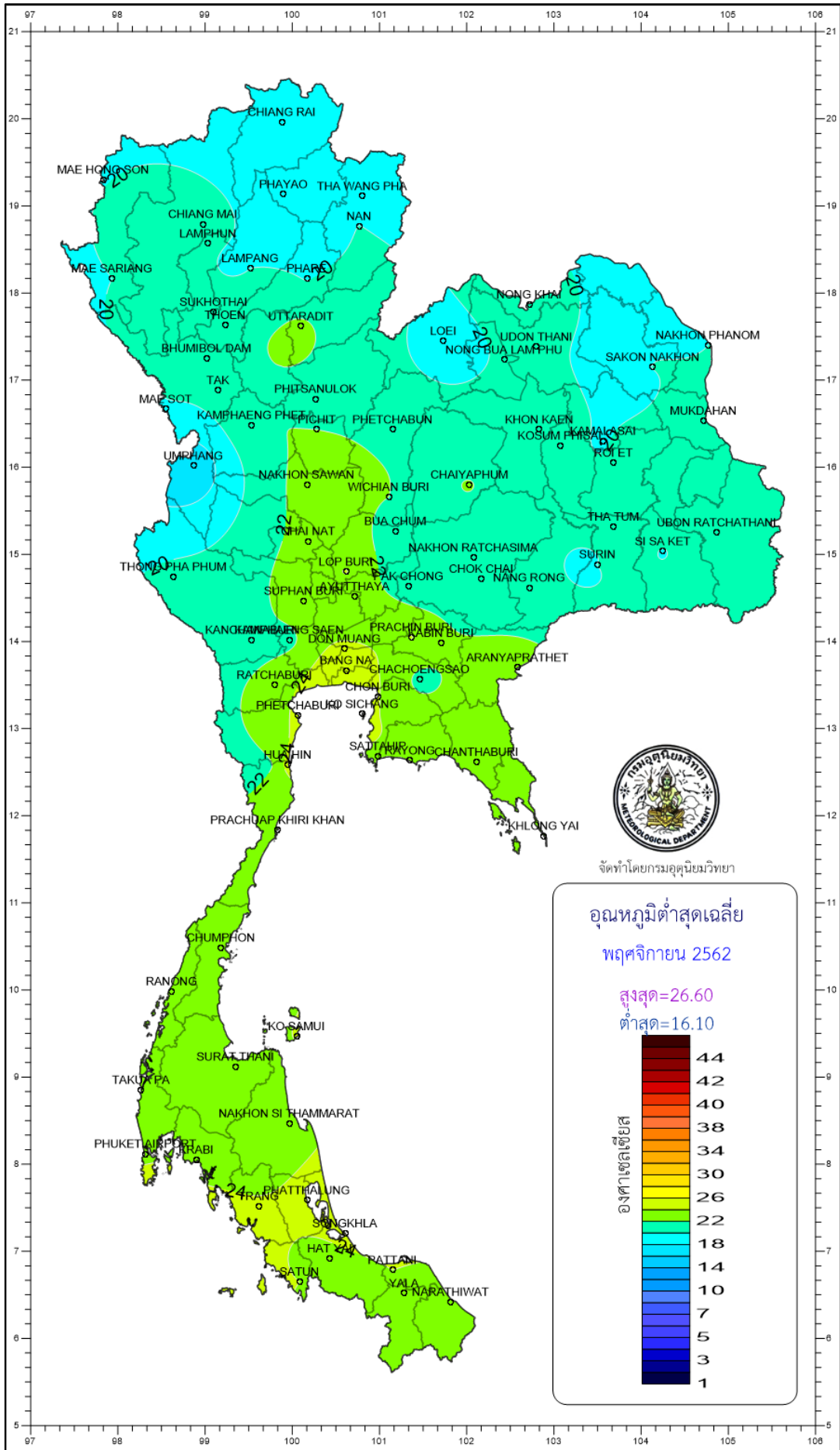




จัดทำโดยกรมอุตุนิยมวิทยา



จัดทำโดยกรมอุตุนิยมวิทยา



จัดทำโดยกรมอุตุนิยมวิทยา

